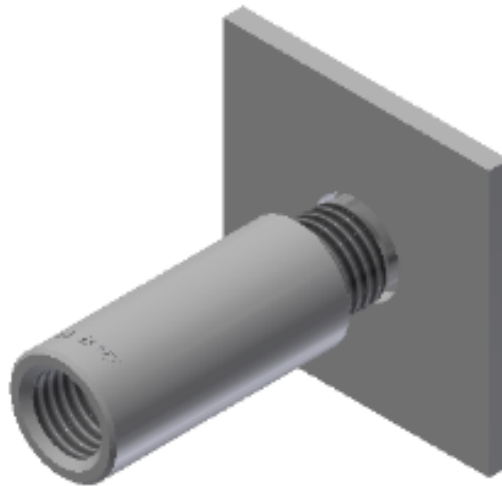


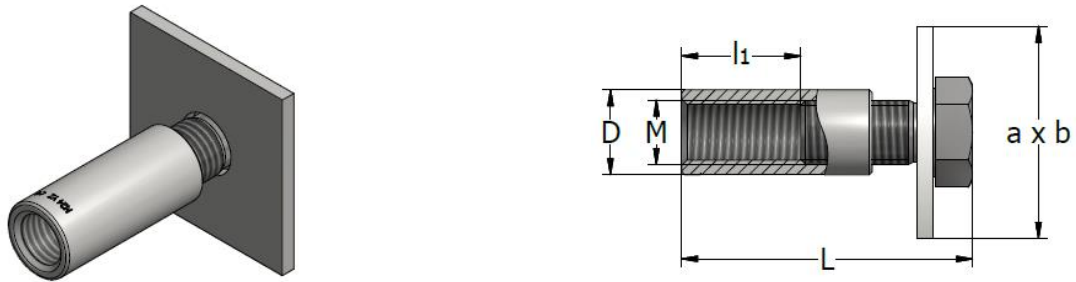
## COMMERCIAL DOCUMENTATION



## FIXING INSERTS | **BBP FIXING BOLT ANCHOR**



## FIXING BOLT ANCHOR – BBP



Fixing bolt anchor BBP consists of a threaded bush locked on a standard bolt and an anchor plate. The threaded bush is manufactured from steel S355JO, electrolytic galvanised (EV) or hot-dipped galvanised (TV); the bolt is made of steel 8.8 with no coating and the plate is manufactured from steel S235, also with no coating. The threaded bush can also be made of stainless-steel W 1.4571 –AISI 316Ti (SS4).

BBP-EV	Product no.	Thread	Overall length L	l1	D	a	b	Admissible load	Screw
		M	[mm]	[mm]	[mm]	[mm]	[mm]	[kN]	
BBP M12x55-EV	63538	12	55	22.5	16	40	40	8	M12x25
BBP M16x75-EV	63541	16	75	30	22	50	50	14	M16x35
BBP M20x90-EV	63544	20	90	37.5	26	60	60	17	M20x40
BBP M24x110-EV	63547	24	110	45	32	80	80	20	M24x50
BBP M30x140-EV	63550	30	140	61	40	100	100	30	M30x60

BBP-TV	Product no.	Thread	Overall length L	l1	D	a	b	Admissible load	Screw
		M	[mm]	[mm]	[mm]	[mm]	[mm]	[kN]	
BBP M12x55-TV	63540	12	55	22.5	16	40	40	8	M12x25
BBP M16x75-TV	63543	16	75	30	22	50	50	14	M16x35
BBP M20x90-TV	63546	20	90	37.5	26	60	60	17	M20x40
BBP M24x110-TV	63549	24	110	45	32	80	80	20	M24x50
BBP M30x140-TV	63552	30	140	61	40	100	100	30	M30x60

BBP-SS (W 1.4301)	Product no.	Thread	Overall length L	l1	D	a	b	Admissible load	Screw
		M	[mm]	[mm]	[mm]	[mm]	[mm]	[kN]	
BBP M12x55-SS4	63539	12	55	22.5	16	40	40	8	M12x25
BBP M16x75-SS4	63542	16	75	30	22	50	50	14	M16x35
BBP M20x90-SS4	63545	20	90	37.5	26	60	60	17	M20x40
BBP M24x110-SS4	63548	24	110	45	32	80	80	20	M24x50
BBP M30x140-SS4	63551	30	140	61	40	100	100	30	M30x60

## CONTACT



TERWA is the global supplier for precast and construction solutions with multiple offices around the world. With all our staff, partners and agents, we are happy to provide all construction and precast companies who work in the building industry with full service and 100% support.

## TERWA CONSTRUCTION GROUP

### Terwa Construction Netherlands (HQ)

**Global Sales & Distribution**  
Kamerlingh Onneslaan 1-3  
3401 MZ IJsselstein  
The Netherlands  
**T** +31-(0)30 699 13 29  
**F** +31-(0)30 220 10 77  
**E** [info@terwa.com](mailto:info@terwa.com)

### Terwa Construction Central East Europe

**Sales & Distribution**  
Strada Sânzieni  
507075 Ghimbav  
Romania  
**T** +40 372 611 576  
**E** [info@terwa.com](mailto:info@terwa.com)

### Terwa Construction Poland

**Sales & Distribution**  
Ul. Cicha 5 lok. 4  
00-353 Warszawa  
Poland  
**E** [info@terwa.com](mailto:info@terwa.com)

### Terwa Construction India & Middle East

**Sales & Distribution**  
India  
**T** +91 89 687 000 41  
**E** [info@terwa.com](mailto:info@terwa.com)

### Terwa Construction China

**Sales & distribution**  
5F 504, No. 101 Chuanchang road  
PRC, 200032, Shanghai  
China  
**E** [info@terwa.com](mailto:info@terwa.com)

**ALL SPECIFICATIONS CAN BE CHANGED WITHOUT PREVIOUS NOTICE.**

## DISCLAIMER

Terwa B.V. is not liable for deviations due to wear of the products it has delivered. Neither is Terwa B.V. liable for damage due to inaccurate and/or improper handling and use of the products it has delivered and/or use of same for purposes other than those intended.

Terwa B.V.'s responsibility is furthermore limited in accordance with article 13 of the "Metaalunie" conditions, which are applicable for all Terwa B.V. deliveries. The user is responsible for ensuring compliance with all applicable copyright laws. Without limiting the rights under copyright, no part of this documentation may be reproduced, stored in or introduced into a retrieval system, or transmitted in any form or by any means (electronic, mechanical, photocopying, recording, or otherwise), or for any purpose, without the express written permission of Terwa B.V.